

# CMI183 & CMI223

## Multi-Faceted MIG/MAG Welders - for all welding situations

### Stepless, digital, compact

Car-O-Liner's CMI183 & CMI223 are stepless, totally digital welders with advanced welding qualities that give synergy between the parameters and the automatic functions. They are extremely user friendly; simply adjust the main parameters and the machines will quickly optimize the rest — you'll be operational in no time!

The super versatile CMI183 & CMI223 can handle all types of MIG/MAG welding, from the most demanding to the simplest, using small or large wire reels.



### Step free MIG/MAG inverter with built in advantages

In order to achieve the greatest possible quality in MIG/MAG-welding the CMI183 & CMI223 series welders are equipped with a permanent 4-wheel drive that ensures a precise and stable wire feed. It is characterized by perfect arc ignition – every single time – and unique welding qualities, using either CO<sub>2</sub> or mixed gases.

**No matter if you are welding in black steel or aluminum.**

### MIG-brazing

The welders are also equipped to handle with finesse the delicate task of MIG-brazing of galvanized steel plates. MIG-brazing insures that the material's corrosion and strength qualities are maintained to the highest degree. This minimizes the need for extra finishing of the plates and profiles, which increases profits and effectivity in the workplace.

### FEATURES & BENEFITS

- **Compact** — easy to use
- **Matches new materials** — and individual user-patterns in all welding environments
- **Synergy program** — decreases the risk of error
- **MIG-brazing** — for galvanized steel
- **4- wheel drive** — with sure-grip
- **Standby (30 W)** — saves energy, CO<sub>2</sub> and increases the lifetime of the machine

# CMI183 & CMI223 Twin

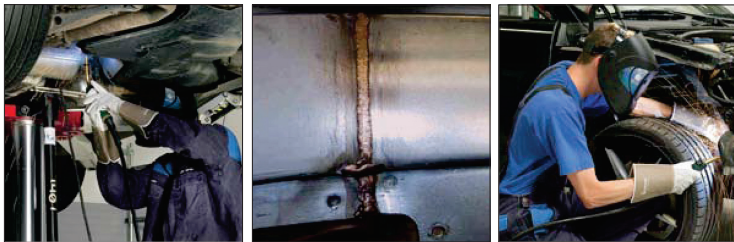
Two wire reels, one for MIG soldering and one for all other types of welding, make it easy to move between welding processes without the need to change the hose, wires, wire feeder or gas tubes.



**MIG-A Twist®** the new firing generation

The rotatable swan neck gives ultimate functionality and comfort. MIG-A Twist, with or without adjustment from the welding handle, is the ultimate match to the Automotive machine's function panel.

**Ignite – push – weld!**



*CMI183 & CMI223 Twin - allows quick movement from one welding moment to another*

## Technical Data

	CMI183 CMI183 Twin	46444 46445	CMI223 CMI223 Twin	43799 43800
Input Voltage +/- 15%	3 x 400V		3 x 400V	
Fuse	10 A		10 A	
Duty Cycle 100% at 40°C	115/19.8		165/22.3	
Duty Cycle 60% at 40°C	125/20.3		175/22.8	
Duty Cycle 100% at 20°C	160		220	
Duty Cycle 60% at 20°C	180			
Current Range, A	15-180 A		5-230 A	
Protection Class	IP23S		IP23S	
Norm	EN/IEC 60974-1/5/10			
HxWxL, cm Single	66x38x79		66x38x79	
HxWxL, cm Twin/Duo	96x60x85		96x60x85	
Weight, Single	26 kg		26 kg	
Weight, Twin/Duo	41 kg		41 kg	

## Easy software-update



For quick and easy up-dating of the software the Automotive i-series has a built in program reader placed within easy reach and well protected at the back of the side panel near the wire box.

33592 ©Car-O-Liner 2015-04

[www.car-o-liner.com](http://www.car-o-liner.com)



Follow us on Facebook



Discover us on car-o-liner.com



Watch us on YouTube

Car-O-Liner is recognized for its leadership in the marketplace by continuously delivering high quality products and exceptional customer service.

Distributor

**CAR-O-LINER®**

# CMI273™ & CMI273™ Duo Pulse

## Multi-Faceted MIG/MAG Welders

### The fully digital revolution - switch on, press and weld

The CMI273 welders are designed for today's vehicles and meet the increasing demands for joining the new materials used in them. Whether doing simple MIG/MAG or complex welding operations, the machines' synergic preset welding programs and automated functions easily handle the entire welding process through the fully digital control panel. The easy-to-use controls provide all key information at a glance. The technician sets the thickness and the machine adjusts all other parameters — **switch on, press and weld!**

### Machines with built-in advantages

#### AUTO PULSE WITH DOUBLE PULSE FUNCTION

**CMI273** is available with a Auto Pulse control panel. This control panel features Double Pulse, an advanced pulse operation which utilizes two pulse levels. The machine's synergic design means that as the levels are pulsed, the wire feed speed and pulse frequencies are also adjusted. The result is a cooler TIG-like weld and better control of the arc with a minimum of weld spatter which ensures preservation of strength and surface of plates and profile tubes.



#### MIG BRAZING

**CMI273 & CMI273 Duo** are equipped with an electronic Boost Converter (autotransformer) for welding and brazing of galvanized steel plates. This function ensures maintenance of the material in terms of corrosion and strength and reduces post-treatment of distortion of plates and profile tubes to a minimum. The result is cost-effective and efficient welding.



#### 4-WHEEL WIRE FEED

The exceptional 4-wheel wire feed system provides a smooth, reliable wire feed even on softer wires such as aluminum or for MIG brazing.

#### BOOST FOR ALL MAINS VOLTAGES

The CMI273i and 273i Duo can also be equipped with an electronic Boost Converter (autotransformer) for welding and brazing on all mono-phase and three-phase mains voltages.

### FEATURES & BENEFITS

- **Protects heat-sensitive metals** — with Auto-Pulse technology
- **Double Pulse Function** — ideal for thinner aluminum and high-tensile steel sheets
- **Saves time** — with synergic pre-set welding programs
- **Convenient** — adjust the weld setting right from the torch
- **Reliably feeds soft wires** — such as aluminum with a precise 4-wheel wire feed system
- **Comfortable** — accesses hard-to-reach places with adjustable MIG-A Twist torch
- **Efficient** — quickly switch between welding operations without having to change hoses, wires, wire drive rolls or gas using the CMI273 Duo Pulse
- **Compact design & low weight** — makes it user friendly, flexible and mobile
- **Energy saving** — standby function (15-30W idling) gives less CO2 emission & long component life

# CMI273 Duo & Duo Pulse

## Precision through Automation

With two torches, the **CMI273 Duo** offers easy switch-over between welding and brazing operations without having to change hoses, wires, wire drive rolls or gas.

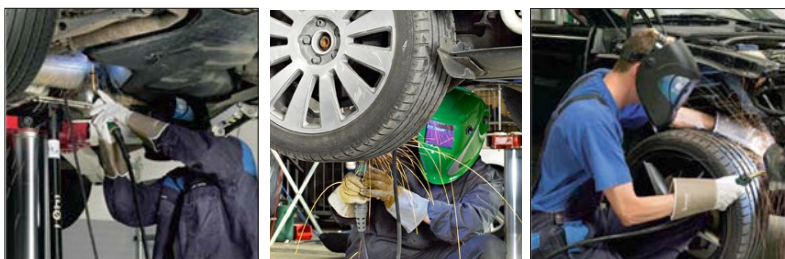
The **CMI273 Duo Pulse** also offers synergic pre-set welding programs and automated functions. This unit is capable of operating on single or three phase power.



**MIG-A Twist®** extend your reach!

The CMI273 welder is equipped with a MIG-A-Twist torch. This unique, swivel device allows you to access hard-to-reach places. Save time by conveniently adjusting the welder using the remote control on the torch and add efficiency to your welding operation.

*Ignite – push – weld!*



*CMI273 Duo Pulse and Boost – allow quick movement from one welding moment to another*

## Technical Data

	CMI273	CMI273 Duo
	<b>CMI273</b> Art. No. 46446 <b>CMI273 Pulse</b> Art. No. 46448	<b>CMI273 Duo</b> Art. No. 46442 <b>CMI273 Duo Pulse</b> Art. No. 46450
Input Voltage +/- 15%	230V (200-440) 1 or 3 PH	230V (200-440) 1 or 3 PH
Fuse	10A	10A
Duty Cycle 100% at 40°C	175A/22.8	175/22.8
Duty Cycle 60% at 40°C	195A	205/24.3
Duty Cycle 100% at 20°C	230A	230
Duty Cycle 60% at 20°C	245A	245
Current Range	10-270A	15-270A
Main Power Cable Length	8 meters	8 meters
Welding Torch Cable Length	4 meters	4 meters
Protection Class	IP23	IP23
Dimensions LxWxH, cm	55x25x64	96x57x87
Weight, kg	26 kg	55 kg

[www.car-o-liner.com](http://www.car-o-liner.com)



Follow us on Facebook



Discover us on car-o-liner.com



Watch us on YouTube

**CAR-O-LINER®**

Car-O-Liner is recognized for its leadership in the marketplace by continuously delivering high quality products and exceptional customer service.

Distributor