

# *Elegance*

CNC Diamond Cut Wheel Machine





Over 1 000 emails, over 120 hours of pre-meetings, over 1 500 hours of R&D work, lots of trashed interface designs to find the best, over 900 hours of design, hundreds of page sketches, a few scrapped prototypes, tens of wheels test, and perfect result...

A few things that come to our mind to create Elegance.



# “Every wheel has right to be renewed.”

*Elegance*

Long-Awaited User Experience With the Full HD 17.3" touchscreen, you will feel like using mobile phone.  
User friendly interface, specially designed in COSEK CO



We have developed for you the best solution for the wheels that are not only scratched but also in need of modification and deserve to be renewed. The expert of brighter and smoother wheels, **Elegance Wheel Diamond Cutting Expert** offers you wheels that will look like they have just been released from the factory.

# Never forget 2,14!



Strong, durable, agile and rigid. This is how we define the design of **Elegance Wheel Diamond Cutting Expert**. It is a real design wonder with wide-view glass designs, bright interior lighting, foldable control panel, combined door system and more.

We know that there is no space for anything unnecessary. That's why we have prepared a solid cabinet design that will store all features within 2,14 m<sup>2</sup>. Let's see, what we have done for you.



## Ergonomic, compact, foldable.

The control panel, which is specially designed for you to be in the best position during operation, provides a wide viewing experience with its superior ease of use and **17.3" or 15.6" Full HD touch screen**. The keypad and handwheel placed under the screen are specially designed to keep all the buttons that should always be on hand.

**The touchscreen computer**, which contains the Windows OS, provides remote support to the application with the integrated **Wi-Fi system**, while also providing **Wi-Fi report printing and e-mail sending features**.

Thanks to its **space-saving design**, it has been specially designed to fold into its slot when you are done with machining, so that you can both protect the screen and save space.



Touchpad



Resolution



17,3" / 15,6"  
Screen



Wi-Fi



## New Mode

# Follow me, Step by step.



Start a new wheel, step by step. The New Mode of Elegance, specially designed for beginners and cautious operators. Control RunOut first, set the starting and ending points, adjust the scanning settings, create the G-Code, simulate and cut. Save the work if you want, and cut the other wheel of the car with the last settings if you want, and finish. Easy, safe, fast. Get the best result in 6 steps. That's all.



### Pro Mode We know, you are professional.

You are professional now. So, to save you time, we put every step in one page. Don't worry, you can still save your work and you can still create reports. Of course, you can still do the whole process step by step and make a perfect, shiny cut.

### Free Mode Beautify with your hands.

Put your signature on wheels with Free Mode. Turn the wheel with adjustable low speed for deburring and finish with handcrafted perfect touch. You can still move tool holder with HandWheel or Jog Pad.

### Open Create your own archive.

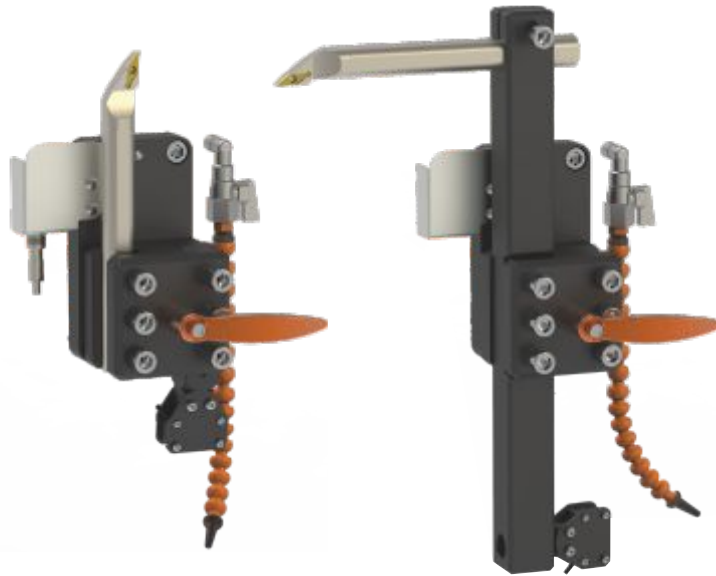
Store more than 20.000 records with before and after pictures. Filter them with customer name or car brand, even with car model. Open it again on New Mode and re-cut wheels with previous settings to avoid scanning process. If you want to e-mail report again, find the record and send it to your customer.

## Simulation Did we overdo it?



“I wish we could see what kind of cutting it would be before proceeding to the machining process”, we seem to hear what you said. We listened to what you said and developed the Simulation Mode for you. Choose how close you want to get to the rim and start the simulation by turning the handwheel. Whether you go forward or back. Don't forget, only in COSEK





Laser horizontal

Laser vertical



Probe horizontal

Probe vertical

## Laser

Continue to make precise measurements with the laser measurement system specially designed for speed lovers. Laser is standart with L-01H, L-01HV, TPL-01H and TPL-01HV.

## TouchProbe

Get precise measurements with the touchprobe scanning system with 0.001mm repeat accuracy. TouchPprobe is standart with TP-01H, TP-01HV, TPL-01H and TPL-01HV.

### TouchProbe & Laser:

We combined the touch probe for the most precise work and the laser when you need to be fast, and we created the TPL series for you. TouchProbe and laser is standart with TPL-01H and TPL-01HV. Don't forget, only in COSEK.



Laser horizontal

## Horizontal

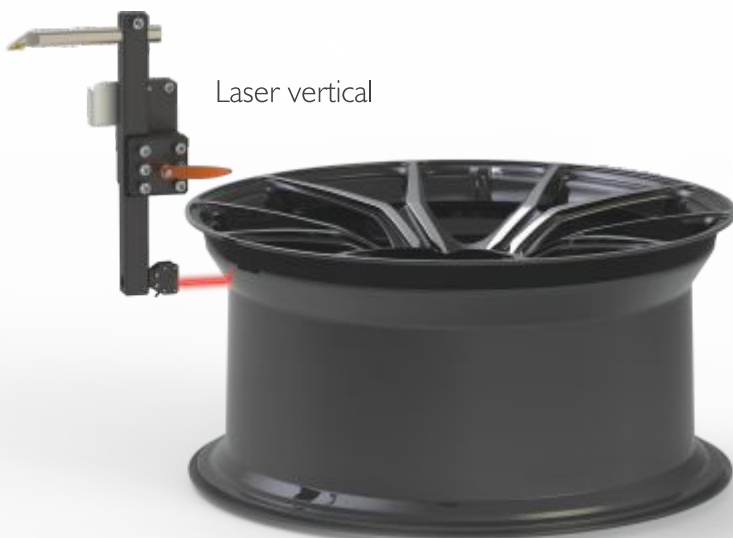
With the horizontal cutting mode developed to cut the upper surface of the rim up to 28 inches, you can cut by taking a measurement by laser or probe. You can have horizontal cut with 01H and 01HV models.



Probe horizontal

## Vertical

Thanks to the vertical mode designed to cut the side surfaces of the rims up to 22 inches, you can cut either by probe or laser measurement. You can have vertical cut with 01HV models.



Print or E-Mail  
**Satisfy your customer.**



We know that every car owner wants to know what action is taken on their car. So, **Elegance Wheel Diamond Cutting Expert** creates a detailed report for you to print with an external printer or through Wi-Fi printer. If you only want to send digital reports to protect nature, Elegance can also e-mail the report for you.

You may also be interested in these.



## PANGEA 12"-28"

PROFESSIONAL RIM REPAIR SERIES

- Move table, more strong lathe
- 2 Slides pressing system
- Digital error measurement
- Error fine tuning + or - 0,1 mm
- More strong body and mile
- With universal repairing head which can turn every where
- Remote control with two 8 ways multiaxes joystick
- High hydraulic speed for easy repair
- Control by 24V DC
- With gear box
- Rim press machine 12"-28" for rims



## PAINTER

PROFESSIONAL RIM PAINTING

- Exproof fan with explosion protection
- 0.37 kW I.I Amp. 2.950 D / D 380V 50-60hz
- Air flow 2000 m<sup>3</sup>/h
- Pressure loss 300 Pa
- Yield 80%
- Operating temperature -40 / +50 C

## Advantage

Step-by-step user friendly interface  
Handwheel simulation mode  
Free-mode for deburr  
Open mode for previous works  
Save, e-mail, print

Up to 20.000 job storage  
Ergonomic and movable control panel  
Totally enclosed body design  
Reinforced steel skid body  
Rigid body design

Compact design to save space  
Long-lasting electrostatic powder painting  
Rim protection in case of power cut situations  
Combine slider door  
Turning without removing the tire  
Online free training (20 hours)

## Specifications

Laser measuring system  
Probe measuring system  
0.001 mm iteration and positioning sensitivity  
Heavy duty linear guideway (2pcs for each axis)  
Heavy duty ball screw

Electronic safe door lock  
Led interior lighting  
Embeded interior camera for reports  
Black chrome chuck clamps  
Skid protection brushes

Ergonomic chip pan  
Led tower light with buzzer  
4 point fast and manual lubricating  
Air-cooling for machining

## Accessories

Left cutting tool  
Right cutting tool  
Straight cutting tool  
Ratchet handle  
Ratchet handle extension  
10 mm hex wrench  
Cutting tool hex wrench  
3 mm hex wrench

## Technics

Atek closed circuit control system by Syntec Co.  
1.1 kW x axis motor  
1.1 kW z axis motor /w brake  
380V 5.5 kW spindle motor (1250 rpm)  
28" horizontal cut  
22" vertical cut  
15" max. Cut height (381 mm)  
12" chuck with reinforced clamps

## Dimensions

Width (mm) 1320  
Length (mm) 1620  
Height (mm) 2245  
Weight (kg) 970

# Models



		TP-01H	TP-01HV	L-01H	L-01HV	TPL-01H	TPI-01HV
<b>Wheel Capacity</b>	• 28" Horizontal Cutting (381 mm Rim Height)	✓	✓	✓	✓	✓	✓
	• 22" Vertical Cutting	✗	✓	✗	✓	✗	✓
	• 12" Chuck /w reinforced BlackChrome Clamps	✓	✓	✓	✓	✓	✓
<b>Software</b>	• Elegance Cutting Expert Software by COSEK.						
	• Windows Operating System	✓	✓	✓	✓	✓	✓
	• Save & E-Mail Report Modules (Direct Print Module with external Printer)						
<b>Computer</b>	• Interior Camera for Before/After Report	✓	✓	✓	✓	✓	✓
	• Standard 15.6" Touch Screen (17.3" Opt.)	17.3" Opt.	17.3" Opt.	17.3" Opt.	17.3" Opt.	17.3" Opt.	17.3" Opt.
	• 802.11ac Wi-Fi Wireless Networking	✓	✓	✓	✓	✓	✓
<b>Measuring</b>	• Probe Measuring System	✓	✓	✗	✗	✓	✓
	• Laser Measuring System	✗	✗	✓	✓	✓	✓
<b>Educate</b>	• Free Online Training (20 Hours)	✓	✓	✓	✓	✓	✓

Göl Mahallesi, Eski Adapazarı Yolu  
Caddesi, amlık sitesi, 6/B,  
Sapanca - Sakarya / TURKEY

[www.cosekcorp.com](http://www.cosekcorp.com)